

SPECIFICATIONS

600SC

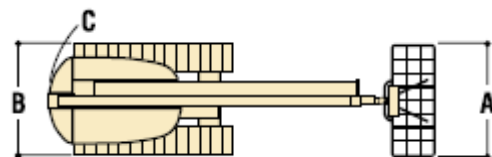
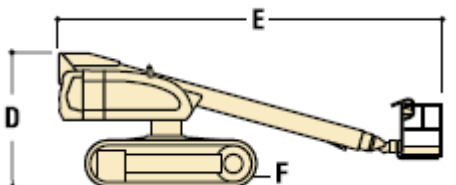
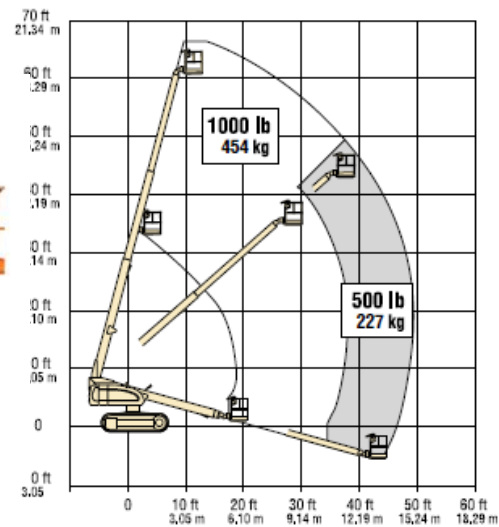
Telescopic Crawler Boom Lift

Key Specs

- Horizontal Outreach: 49 ft 6 in. / 15.09 m
- Platform Capacity - Restricted: 1000 lb / 453.59 kg
- Platform Capacity - Unrestricted: 500 lb / 226.80 kg
- Platform Height: 60 ft 3 in. / 18.36 m

Key Features

- For your toughest jobs and terrains, the 600 Crawler Series
- provides the mobility you need
- Single drive / steer joystick for one-handed operation
- Zero turning radius to get around the jobsite easier



Power Source

Auxiliary Power	12 Volts DC
Capacity - Fuel Tank	40 gal. / 151.42 L
Engine Type - Diesel	DEUTZ TD 2.9L Tier 4 Final 67 hp



SPECIFICATIONS

Performance

Axle Oscillation	0 in. / 0 mm
Drive Speed - 4WD	2 mph / 2.57 km/h
Gradeability - 4WD	55 %
Platform Capacity - Restricted	1000 lb / 453.59 kg
Platform Capacity - Unrestricted	500 lb / 226.80 kg
Swing	360 Degrees
Swing Type	Continuous
Turning Radius - Outside	0 in. / 0 mm

Dimensional Data

Ground Clearance	1 ft 3 in. / 0.38 m
Machine Height	8 ft 5 in. / 2.57 m
Machine Length	27 ft 11 in. / 8.51 m
Machine Width	8 ft 2 in. / 2.49 m
Platform Dimension A	3 ft / 0.91 m
Platform Dimension B	8 ft / 2.44 m
Platform Height	60 ft 3 in. / 18.36 m
Tailswing	3 ft 8 in. / 1.12 m
Track Width	1 ft 8 in. / 0.51 m

Reach Specifications

Horizontal Jib Rotation	0 Degrees
Horizontal Outreach	49 ft 6 in. / 15.09 m
Platform Height	60 ft 3 in. / 18.36 m
Vertical Jib Rotation	0 Degrees

General

Capacity - Hydraulic Reservoir	32 gal. / 121.13 L
Ground Bearing Pressure	5 psi / 0.38 Kg/cm ²
Machine Weight	22500 lb / 10205.83 kg