



SPECIFICATIONS

660SJ

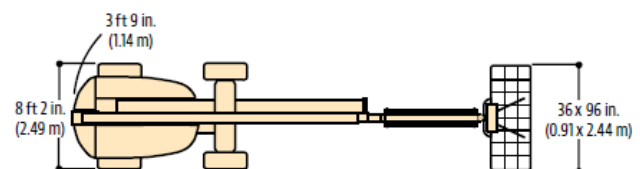
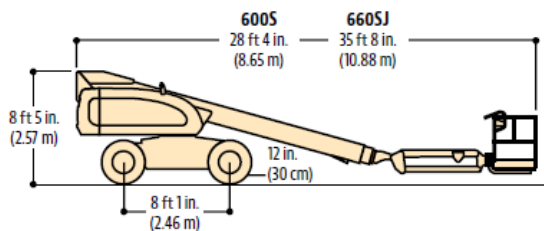
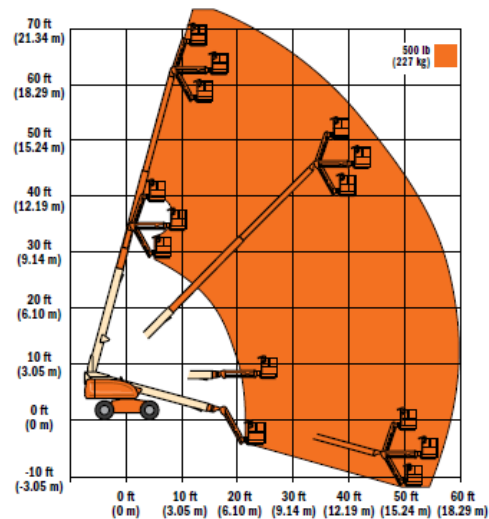
Telescopic Boom Lift

Key Specs

- **Horizontal Outreach:** 56 ft 9 in. / 17.3 m
- **Platform Capacity - Unrestricted:** 500 lb / 226.80 kg
- **Platform Height:** 66 ft 8 in. / 20.32 m

Key Features

- Best selling 60 ft boom lifts
- Select from 2 models
- Easy-to-use platform controls reduce operator training time
- Equipped with a fuel-efficient Tier 4 engine



Power Source

Auxiliary Power

12 Volts DC

Capacity - Fuel Tank

40 gal. / 151.42 L

Engine Type - Diesel

DEUTZ TD 2.9L Tier 4 Final 67 hp

Engine Type - Dual Fuel

GM Vortec 3000 MPR 82 hp



SPECIFICATIONS

Performance

Axle Oscillation	8 in. / 0.2 m
Drive Speed - 2WD	4 mph / 6.84 km/h
Drive Speed - 4WD	4 mph / 6.84 km/h
Gradeability - 2WD	30 %
Gradeability - 4WD	45 %
Platform Capacity - Unrestricted	500 lb / 226.80 kg
Swing	360 Degrees
Swing Type	Continuous
Turning Radius - Outside (2WS)	17 ft 7 in. / 5.36 m
Turning Radius - Outside (4WS)	9 ft 6 in. / 2.9 m

Dimensional Data

Ground Clearance	1 ft / 0.3 m
Machine Height	8 ft 5 in. / 2.56 m
Machine Length	35 ft 8 in. / 10.87 m
Machine Width	8 ft 2 in. / 2.49 m
Platform Dimension A	3 ft / 0.91 m
Platform Dimension B	8 ft / 2.44 m
Platform Height	66 ft 8 in. / 20.32 m
Tailswing	3 ft 9 in. / 1.14 m
Tire Size	39 x 15-22.5 Lug Tread

Reach Specifications

Horizontal Jib Rotation	0 Degrees
Horizontal Outreach	56 ft 9 in. / 17.3 m
Platform Height	66 ft 8 in. / 20.32 m
Vertical Jib Rotation	132 Degrees

General

Capacity - Hydraulic Reservoir	32 gal. / 121.13 L
Ground Bearing Pressure	75 psi / 5.25 Kg/cm2
Machine Weight	26650 lb / 12088.24 kg